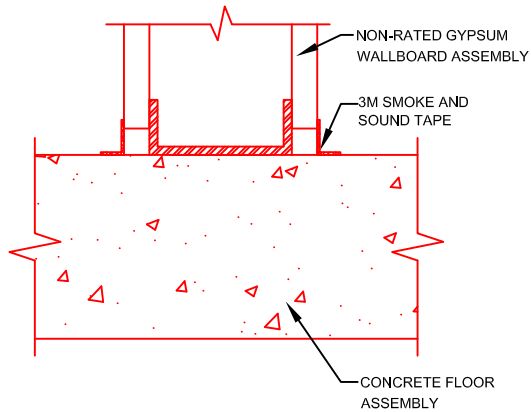
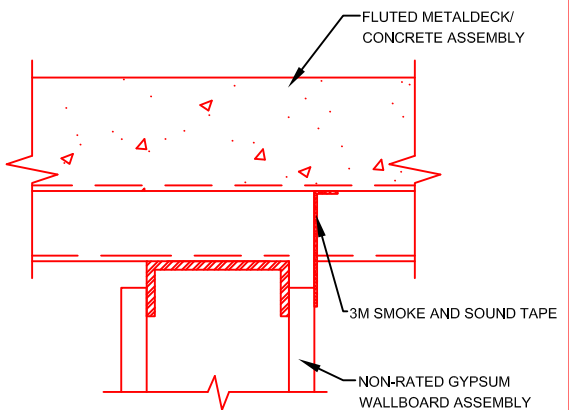
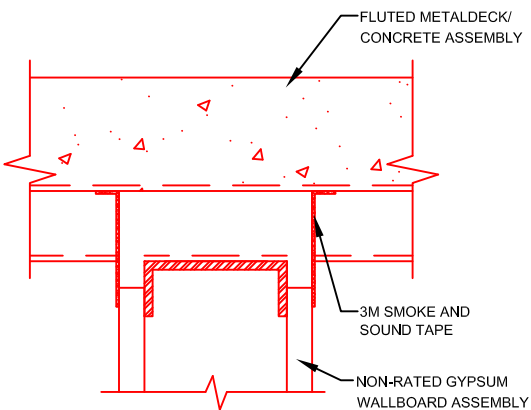
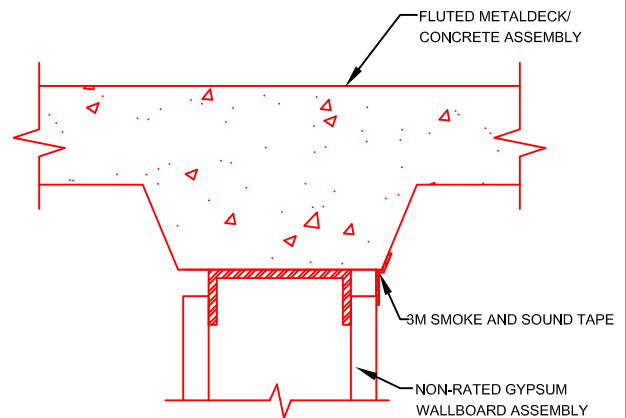
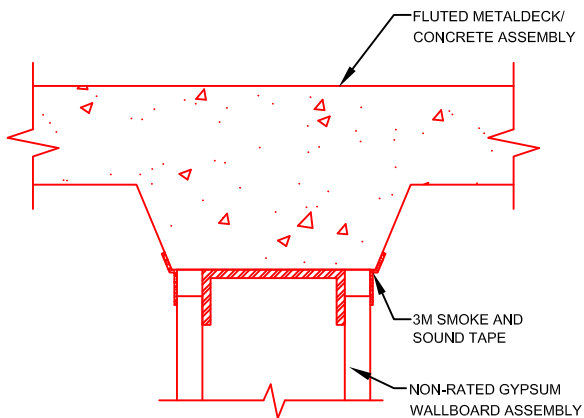
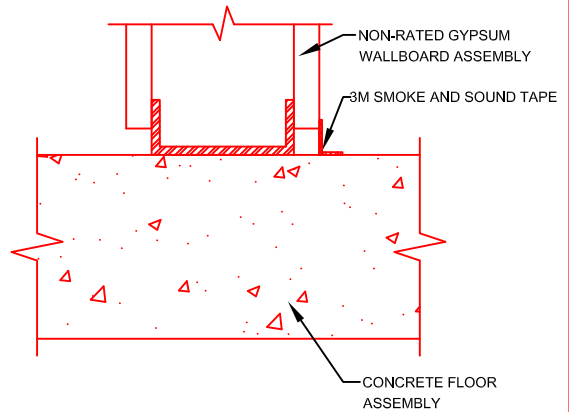


# 3M SMOKE AND SOUND TAPE INSTALLATION GUIDE

## 2-SIDED APPLICATION



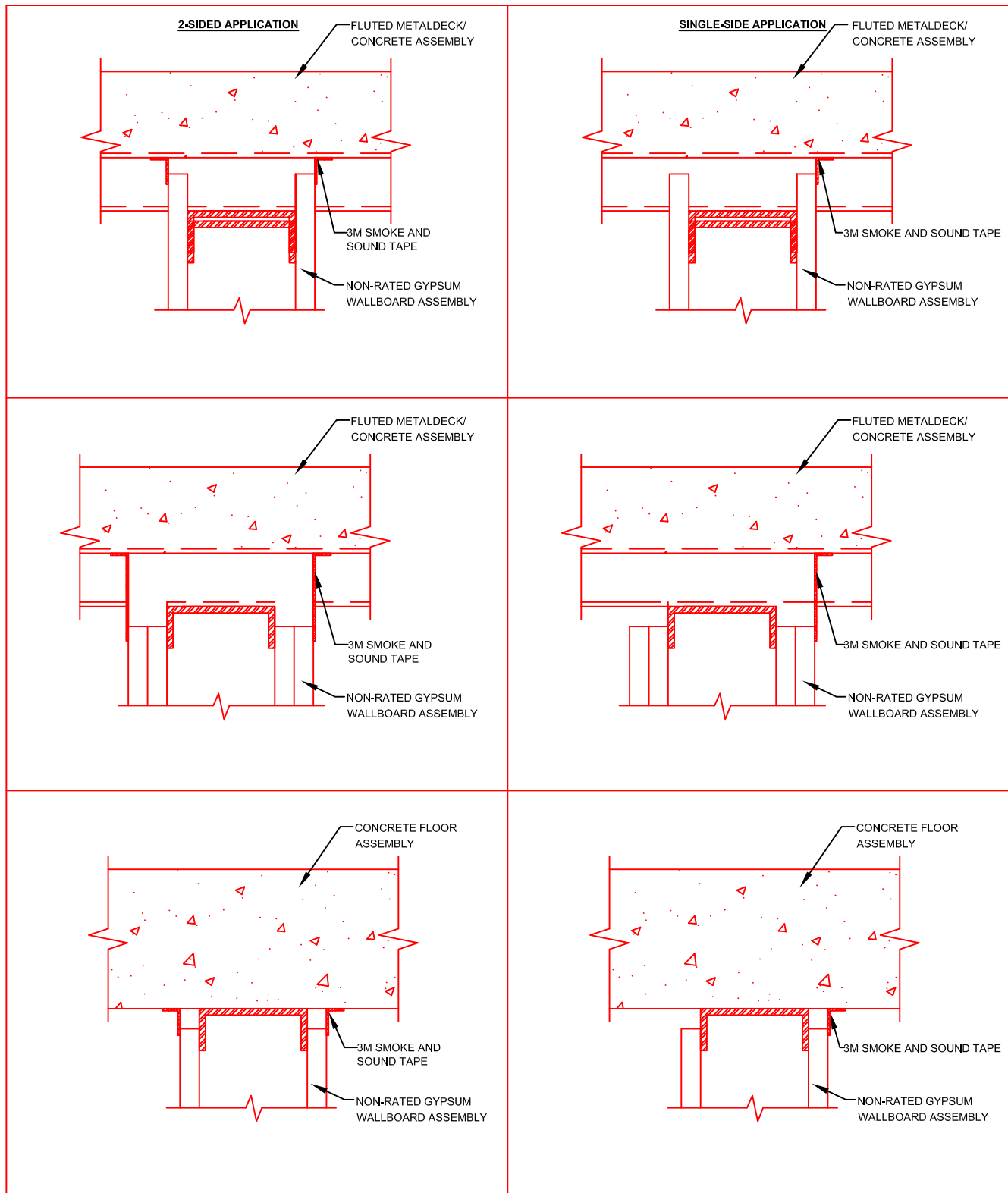
## SINGLE-SIDE APPLICATION



### NOTES/LIMITATIONS

1. THIS PRODUCT IS NOT FOR USE AS A COMMERCIAL FIRESTOP
2. PRODUCT MAY BE APPLIED AT A TEMPERATURE BETWEEN 0°F (-18°C) AND 120°F (49°C).
3. PRODUCT CAN BE APPLIED AND EXPECTED TO ADHERE TO SURFACES THAT ARE 0°F (-18°C) OR HIGHER PROVIDING THAT THE SURFACES ARE FROST FREE, CLEAN, AND DUST FREE.
4. FOR OPTIMAL ADHESION TO CONCRETE, SURFACE SHOULD BE A STEEL FLOATED SMOOTH SURFACE, OR EQUIVALENT, THAT IS FREE OF CHEMICAL ADDITIVES AND/OR COMPOUNDS THAT COULD INHIBIT ADHESION. FOR ROUGHER SURFACES (E.G. BROOM FINISHED) TAPE OVERLAP ONTO SUBSTRATE MAY NEED TO BE INCREASED TO ACHIEVE OPTIMAL ADHESION. CHECK WITH YOUR LOCAL 3M REP TO DETERMINE ACCEPTABLE FINISHES AND REQUIRED OVERLAPS.
5. DETAILS REPRESENT GENERAL INSTALLATION GUIDELINES TO SATISFY SMOKE AND/OR SOUND PARTITION REQUIREMENTS OF THE CURRENT ADOPTION OF THE INTERNATIONAL BUILDING CODE OR LOCAL AUTHORITY HAVING JURISDICTION.
6. FOR SINGLE SIDE APPLICATION 2 LAYERS OF TAPE MUST BE APPLIED TO ACHIEVE L RATING @ 400DEG. F
7. FOR IMPROVED STC RATING PACKING MATERIAL CAN BE INSTALLED.

# 3M SMOKE AND SOUND TAPE INSTALLATION GUIDE

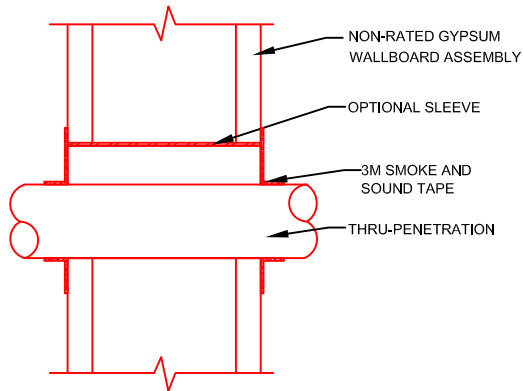


## NOTES/LIMITATIONS

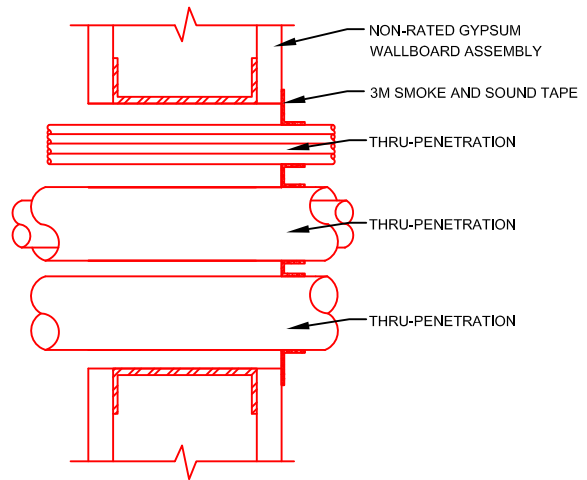
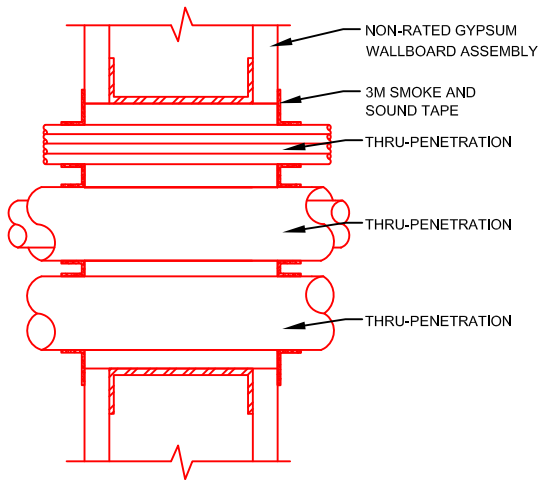
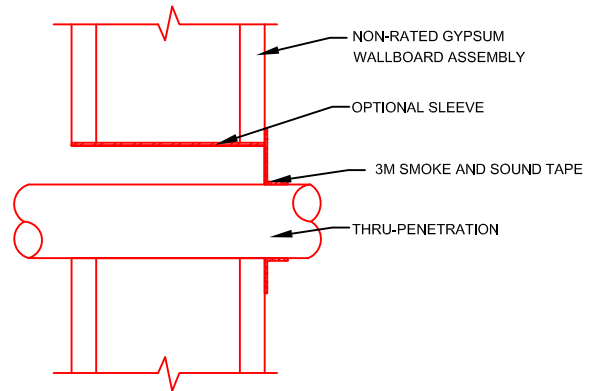
1. THIS PRODUCT IS NOT FOR USE AS A COMMERCIAL FIRESTOP
2. PRODUCT MAY BE APPLIED AT A TEMPERATURE BETWEEN 0°F (-18°C) AND 120°F (49°C).
3. PRODUCT CAN BE APPLIED AND EXPECTED TO ADHERE TO SURFACES THAT ARE 0°F (-18°C) OR HIGHER PROVIDING THAT THE SURFACES ARE FROST FREE, CLEAN, AND DUST FREE.
4. FOR OPTIMAL ADHESION TO CONCRETE, SURFACE SHOULD BE A STEEL FLOATED SMOOTH SURFACE, OR EQUIVALENT, THAT IS FREE OF CHEMICAL ADDITIVES AND/OR COMPOUNDS THAT COULD INHIBIT ADHESION. FOR ROUGHER SURFACES (E.G. BROOM FINISHED) TAPE OVERLAP ONTO SUBSTRATE MAY NEED TO BE INCREASED TO ACHIEVE OPTIMAL ADHESION. CHECK WITH YOUR LOCAL 3M REP TO DETERMINE ACCEPTABLE FINISHES AND REQUIRED OVERLAPS.
5. DETAILS REPRESENT GENERAL INSTALLATION GUIDELINES TO SATISFY SMOKE AND/OR SOUND PARTITION REQUIREMENTS OF THE CURRENT ADOPTION OF THE INTERNATIONAL BUILDING CODE OR LOCAL AUTHORITY HAVING JURISDICTION.
6. FOR SINGLE SIDE APPLICATION 2 LAYERS OF TAPE MUST BE APPLIED TO ACHIEVE L RATING @ 400DEG. F
7. FOR IMPROVED STC RATING PACKING MATERIAL CAN BE INSTALLED.

# 3M SMOKE AND SOUND TAPE INSTALLATION GUIDE

## 2-SIDED APPLICATION



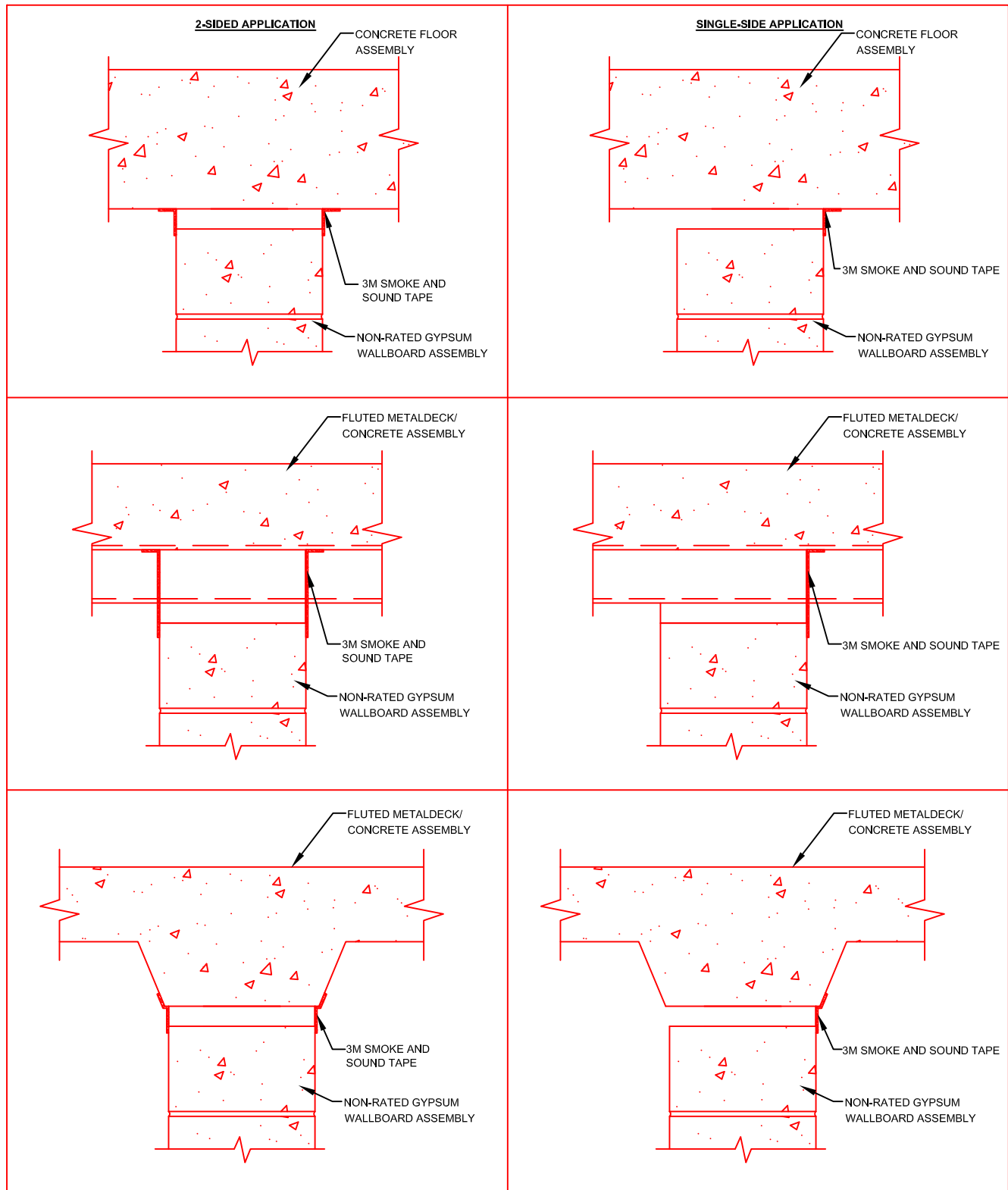
## SINGLE-SIDE APPLICATION



### NOTES/LIMITATIONS

1. THIS PRODUCT IS NOT FOR USE AS A COMMERCIAL FIRESTOP
2. PRODUCT MAY BE APPLIED AT A TEMPERATURE BETWEEN 0°F (-18°C) AND 120°F (49°C).
3. PRODUCT CAN BE APPLIED AND EXPECTED TO ADHERE TO SURFACES THAT ARE 0°F (-18°C) OR HIGHER PROVIDING THAT THE SURFACES ARE FROST FREE, CLEAN, AND DUST FREE.
4. FOR OPTIMAL ADHESION TO CONCRETE, SURFACE SHOULD BE A STEEL FLOATED SMOOTH SURFACE, OR EQUIVALENT, THAT IS FREE OF CHEMICAL ADDITIVES AND/OR COMPOUNDS THAT COULD INHIBIT ADHESION. FOR ROUGHER SURFACES (E.G. BROOM FINISHED) TAPE OVERLAP ONTO SUBSTRATE MAY NEED TO BE INCREASED TO ACHIEVE OPTIMAL ADHESION. CHECK WITH YOUR LOCAL 3M REP TO DETERMINE ACCEPTABLE FINISHES AND REQUIRED OVERLAPS.
5. DETAILS REPRESENT GENERAL INSTALLATION GUIDELINES TO SATISFY SMOKE AND/OR SOUND PARTITION REQUIREMENTS OF THE CURRENT ADOPTION OF THE INTERNATIONAL BUILDING CODE OR LOCAL AUTHORITY HAVING JURISDICTION.
6. FOR SINGLE SIDE APPLICATION 2 LAYERS OF TAPE MUST BE APPLIED TO ACHIEVE L RATING @ 400DEG. F
7. FOR IMPROVED STC RATING PACKING MATERIAL CAN BE INSTALLED.

# 3M SMOKE AND SOUND TAPE INSTALLATION GUIDE

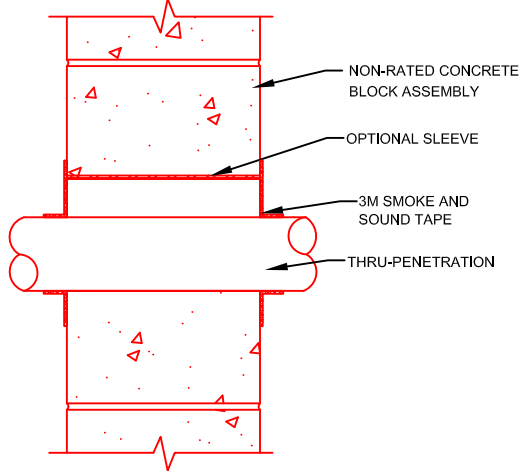


## NOTES/LIMITATIONS

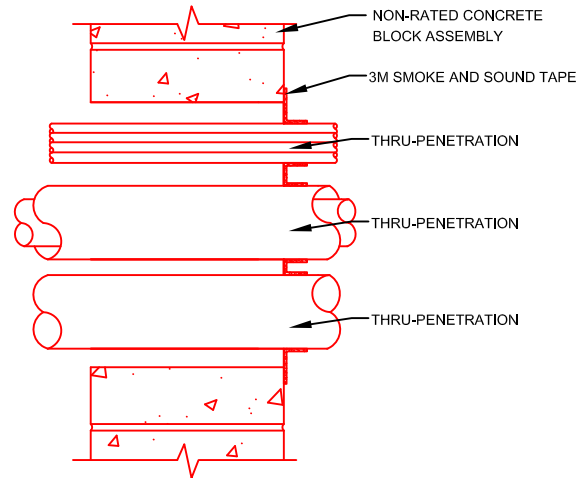
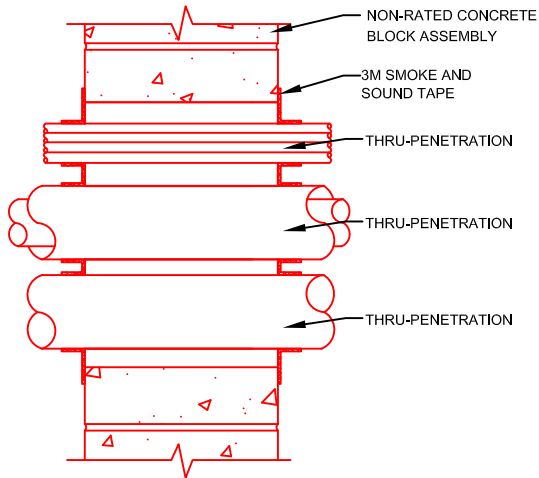
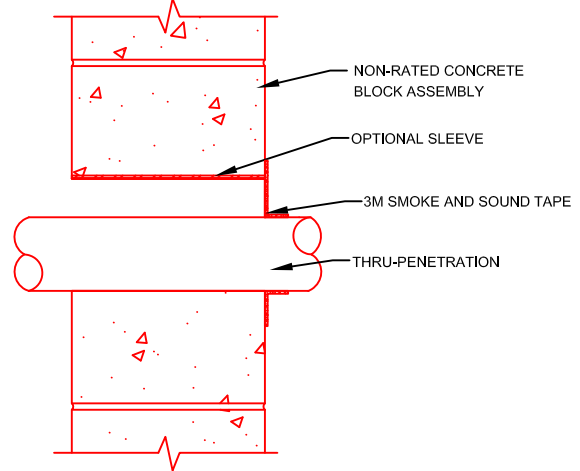
1. THIS PRODUCT IS NOT FOR USE AS A COMMERCIAL FIRESTOP
2. PRODUCT MAY BE APPLIED AT A TEMPERATURE BETWEEN 0°F (-18°C) AND 120°F (49°C).
3. PRODUCT CAN BE APPLIED AND EXPECTED TO ADHERE TO SURFACES THAT ARE 0°F (-18°C) OR HIGHER PROVIDING THAT THE SURFACES ARE FROST FREE, CLEAN, AND DUST FREE.
4. FOR OPTIMAL ADHESION TO CONCRETE, SURFACE SHOULD BE A STEEL FLOATED SMOOTH SURFACE, OR EQUIVALENT, THAT IS FREE OF CHEMICAL ADDITIVES AND/OR COMPOUNDS THAT COULD INHIBIT ADHESION. FOR ROUGHER SURFACES (E.G. BROOM FINISHED) TAPE OVERLAP ONTO SUBSTRATE MAY NEED TO BE INCREASED TO ACHIEVE OPTIMAL ADHESION. CHECK WITH YOUR LOCAL 3M REP TO DETERMINE ACCEPTABLE FINISHES AND REQUIRED OVERLAPS.
5. DETAILS REPRESENT GENERAL INSTALLATION GUIDELINES TO SATISFY SMOKE AND/OR SOUND PARTITION REQUIREMENTS OF THE CURRENT ADOPTION OF THE INTERNATIONAL BUILDING CODE OR LOCAL AUTHORITY HAVING JURISDICTION.
6. FOR SINGLE SIDE APPLICATION 2 LAYERS OF TAPE MUST BE APPLIED TO ACHIEVE L RATING @ 400DEG. F
7. FOR IMPROVED STC RATING PACKING MATERIAL CAN BE INSTALLED.

# 3M SMOKE AND SOUND TAPE INSTALLATION GUIDE

2-SIDED APPLICATION



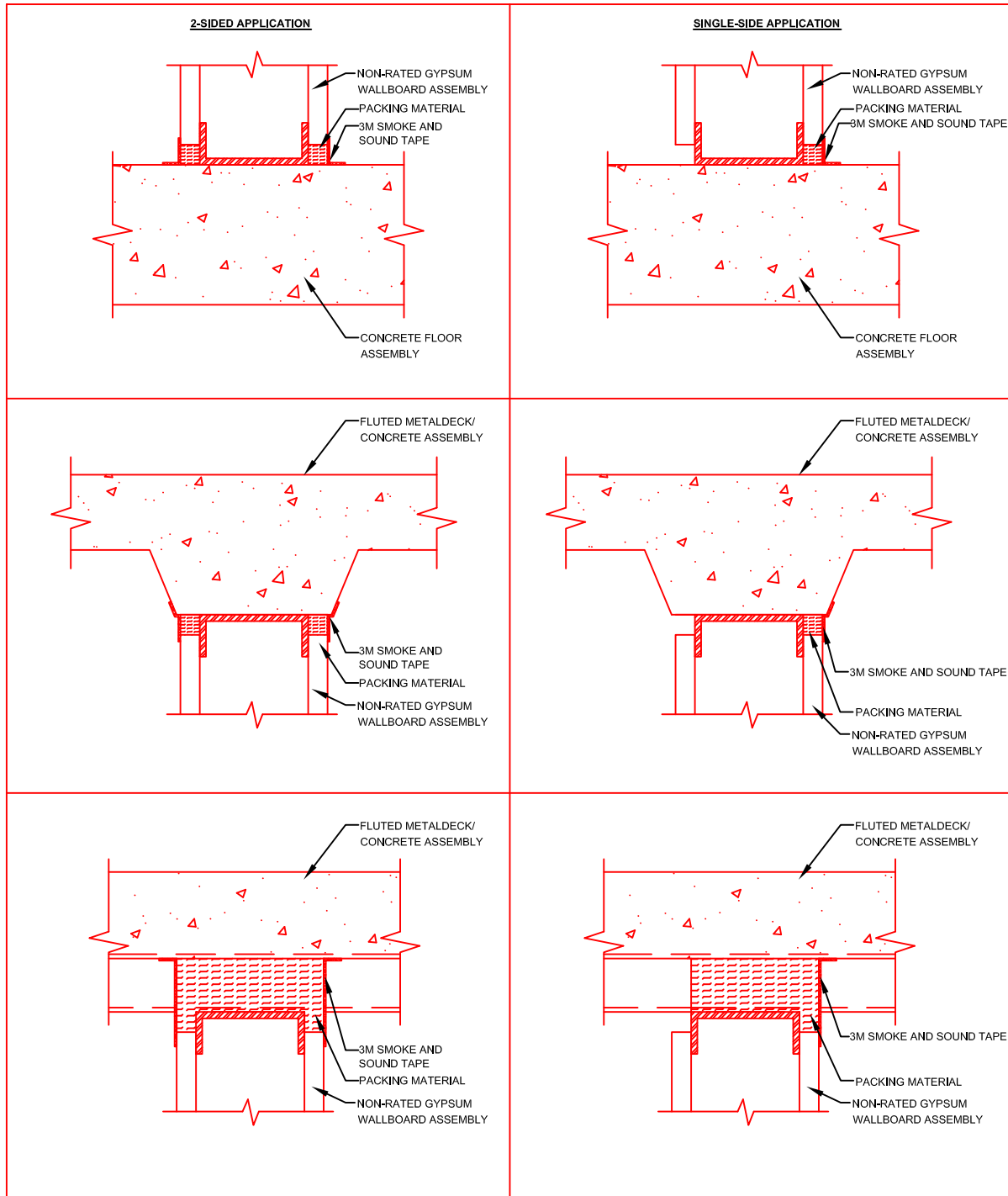
SINGLE-SIDE APPLICATION



## NOTES/LIMITATIONS

1. THIS PRODUCT IS NOT FOR USE AS A COMMERCIAL FIRESTOP
2. PRODUCT MAY BE APPLIED AT A TEMPERATURE BETWEEN 0°F (-18°C) AND 120°F (49°C).
3. PRODUCT CAN BE APPLIED AND EXPECTED TO ADHERE TO SURFACES THAT ARE 0°F (-18°C) OR HIGHER PROVIDING THAT THE SURFACES ARE FROST FREE, CLEAN, AND DUST FREE.
4. FOR OPTIMAL ADHESION TO CONCRETE, SURFACE SHOULD BE A STEEL FLOATED SMOOTH SURFACE, OR EQUIVALENT, THAT IS FREE OF CHEMICAL ADDITIVES AND/OR COMPOUNDS THAT COULD INHIBIT ADHESION. FOR ROUGHER SURFACES (E.G. BROOM FINISHED) TAPE OVERLAP ONTO SUBSTRATE MAY NEED TO BE INCREASED TO ACHIEVE OPTIMAL ADHESION. CHECK WITH YOUR LOCAL 3M REP TO DETERMINE ACCEPTABLE FINISHES AND REQUIRED OVERLAPS.
5. DETAILS REPRESENT GENERAL INSTALLATION GUIDELINES TO SATISFY SMOKE AND/OR SOUND PARTITION REQUIREMENTS OF THE CURRENT ADOPTION OF THE INTERNATIONAL BUILDING CODE OR LOCAL AUTHORITY HAVING JURISDICTION.
6. FOR SINGLE SIDE APPLICATION 2 LAYERS OF TAPE MUST BE APPLIED TO ACHIEVE L RATING @ 400DEG. F
7. FOR IMPROVED STC RATING PACKING MATERIAL CAN BE INSTALLED.

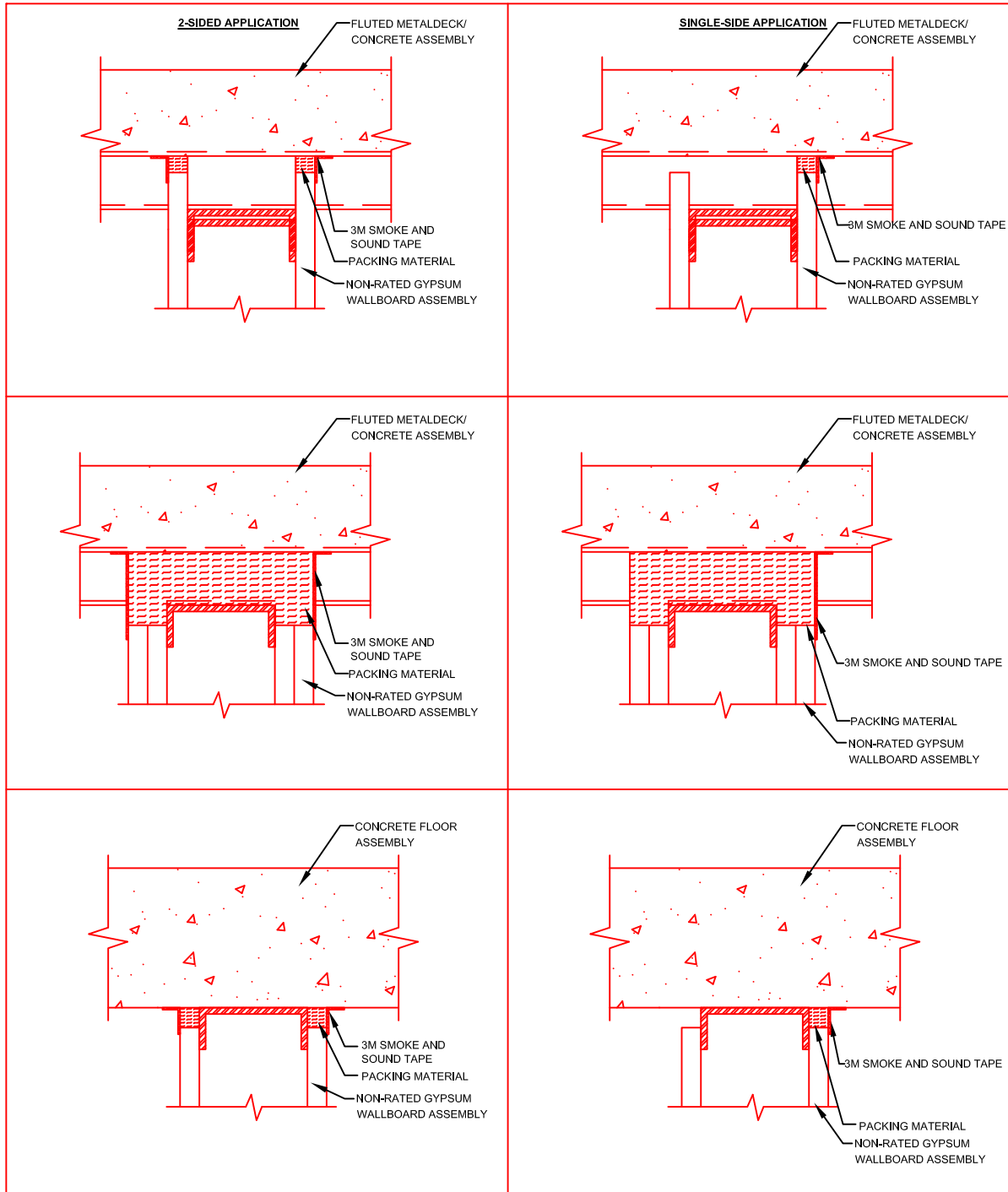
# 3M SMOKE AND SOUND TAPE INSTALLATION GUIDE



## NOTES/LIMITATIONS

1. THIS PRODUCT IS NOT FOR USE AS A COMMERCIAL FIRESTOP
2. PRODUCT MAY BE APPLIED AT A TEMPERATURE BETWEEN 0°F (-18°C) AND 120°F (49°C).
3. PRODUCT CAN BE APPLIED AND EXPECTED TO ADHERE TO SURFACES THAT ARE 0°F (-18°C) OR HIGHER PROVIDING THAT THE SURFACES ARE FROST FREE, CLEAN, AND DUST FREE.
4. FOR OPTIMAL ADHESION TO CONCRETE, SURFACE SHOULD BE A STEEL FLOATED SMOOTH SURFACE, OR EQUIVALENT, THAT IS FREE OF CHEMICAL ADDITIVES AND/OR COMPOUNDS THAT COULD INHIBIT ADHESION. FOR ROUGHER SURFACES (E.G. BROOM FINISHED) TAPE OVERLAP ONTO SUBSTRATE MAY NEED TO BE INCREASED TO ACHIEVE OPTIMAL ADHESION. CHECK WITH YOUR LOCAL 3M REP TO DETERMINE ACCEPTABLE FINISHES AND REQUIRED OVERLAPS.
5. DETAILS REPRESENT GENERAL INSTALLATION GUIDELINES TO SATISFY SMOKE AND/OR SOUND PARTITION REQUIREMENTS OF THE CURRENT ADOPTION OF THE INTERNATIONAL BUILDING CODE OR LOCAL AUTHORITY HAVING JURISDICTION.
6. FOR SINGLE SIDE APPLICATION 2 LAYERS OF TAPE MUST BE APPLIED TO ACHIEVE L RATING @ 400DEG. F
7. FOR IMPROVED STC RATING PACKING MATERIAL CAN BE INSTALLED.

# 3M SMOKE AND SOUND TAPE INSTALLATION GUIDE

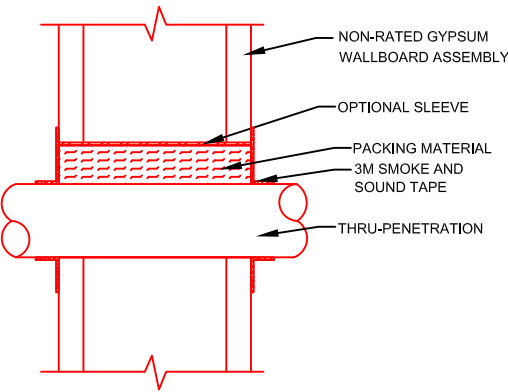


## NOTES/LIMITATIONS

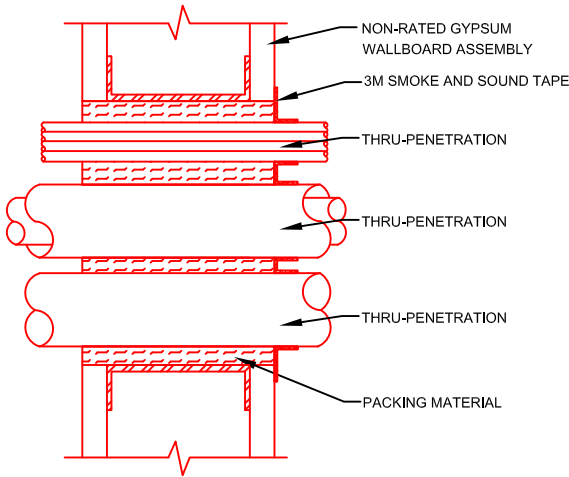
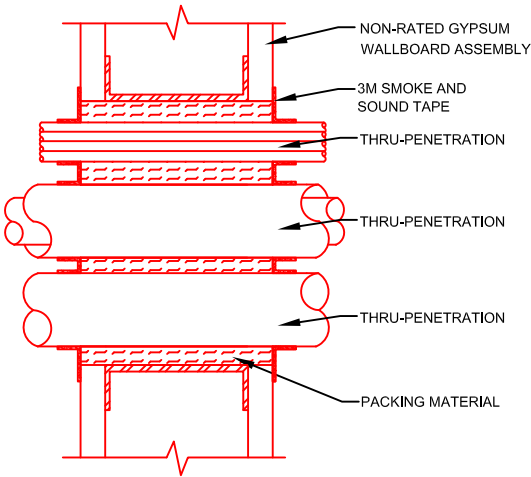
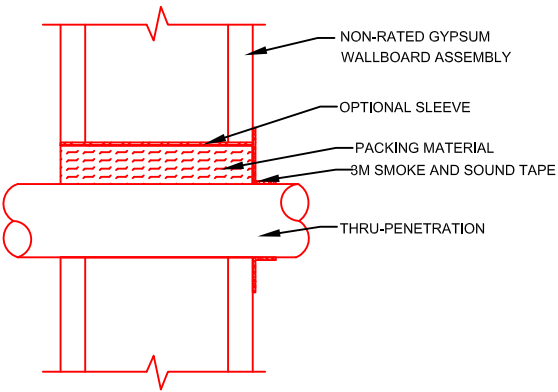
1. THIS PRODUCT IS NOT FOR USE AS A COMMERCIAL FIRESTOP
2. PRODUCT MAY BE APPLIED AT A TEMPERATURE BETWEEN 0°F (-18°C) AND 120°F (49°C).
3. PRODUCT CAN BE APPLIED AND EXPECTED TO ADHERE TO SURFACES THAT ARE 0°F (-18°C) OR HIGHER PROVIDING THAT THE SURFACES ARE FROST FREE, CLEAN, AND DUST FREE.
4. FOR OPTIMAL ADHESION TO CONCRETE, SURFACE SHOULD BE A STEEL FLOATED SMOOTH SURFACE, OR EQUIVALENT, THAT IS FREE OF CHEMICAL ADDITIVES AND/OR COMPOUNDS THAT COULD INHIBIT ADHESION. FOR ROUGHER SURFACES (E.G. BROOM FINISHED) TAPE OVERLAP ONTO SUBSTRATE MAY NEED TO BE INCREASED TO ACHIEVE OPTIMAL ADHESION. CHECK WITH YOUR LOCAL 3M REP TO DETERMINE ACCEPTABLE FINISHES AND REQUIRED OVERLAPS.
5. DETAILS REPRESENT GENERAL INSTALLATION GUIDELINES TO SATISFY SMOKE AND/OR SOUND PARTITION REQUIREMENTS OF THE CURRENT ADOPTION OF THE INTERNATIONAL BUILDING CODE OR LOCAL AUTHORITY HAVING JURISDICTION.
6. FOR SINGLE SIDE APPLICATION 2 LAYERS OF TAPE MUST BE APPLIED TO ACHIEVE L RATING @ 400DEG. F
7. FOR IMPROVED STC RATING PACKING MATERIAL CAN BE INSTALLED.

# 3M SMOKE AND SOUND TAPE INSTALLATION GUIDE

## 2-SIDED APPLICATION



## SINGLE-SIDE APPLICATION

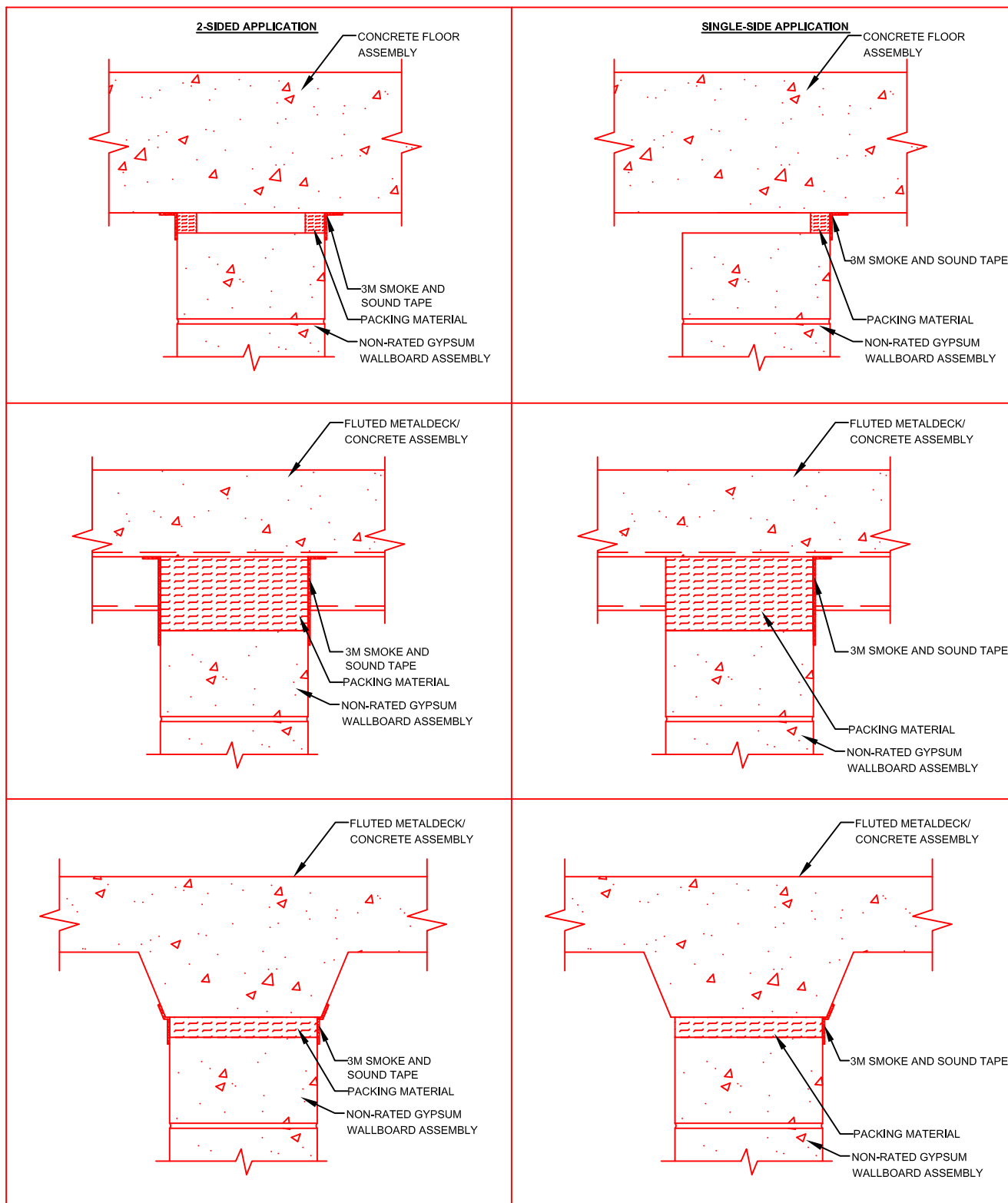


### NOTES/LIMITATIONS

1. THIS PRODUCT IS NOT FOR USE AS A COMMERCIAL FIRESTOP
2. PRODUCT MAY BE APPLIED AT A TEMPERATURE BETWEEN 0°F (-18°C) AND 120°F (49°C).
3. PRODUCT CAN BE APPLIED AND EXPECTED TO ADHERE TO SURFACES THAT ARE 0°F (-18°C) OR HIGHER PROVIDING THAT THE SURFACES ARE FROST FREE, CLEAN, AND DUST FREE.
4. FOR OPTIMAL ADHESION TO CONCRETE, SURFACE SHOULD BE A STEEL FLOATED SMOOTH SURFACE, OR EQUIVALENT, THAT IS FREE OF CHEMICAL ADDITIVES AND/OR COMPOUNDS THAT COULD INHIBIT ADHESION. FOR ROUGHER SURFACES (E.G. BROOM FINISHED) TAPE OVERLAP ONTO SUBSTRATE MAY NEED TO BE INCREASED TO ACHIEVE OPTIMAL ADHESION. CHECK WITH YOUR LOCAL 3M REP TO DETERMINE ACCEPTABLE FINISHES AND REQUIRED OVERLAPS.
5. DETAILS REPRESENT GENERAL INSTALLATION GUIDELINES TO SATISFY SMOKE AND/OR SOUND PARTITION REQUIREMENTS OF THE CURRENT ADOPTION OF THE INTERNATIONAL BUILDING CODE OR LOCAL AUTHORITY HAVING JURISDICTION.
6. FOR SINGLE SIDE APPLICATION 2 LAYERS OF TAPE MUST BE APPLIED TO ACHIEVE L RATING @ 400DEG. F
7. FOR IMPROVED STC RATING PACKING MATERIAL CAN BE INSTALLED.



# 3M SMOKE AND SOUND TAPE INSTALLATION GUIDE

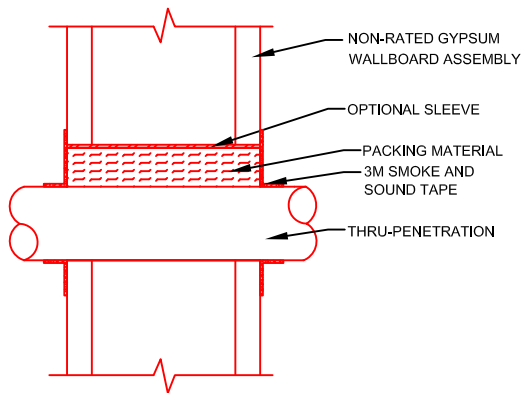


## NOTES/LIMITATIONS

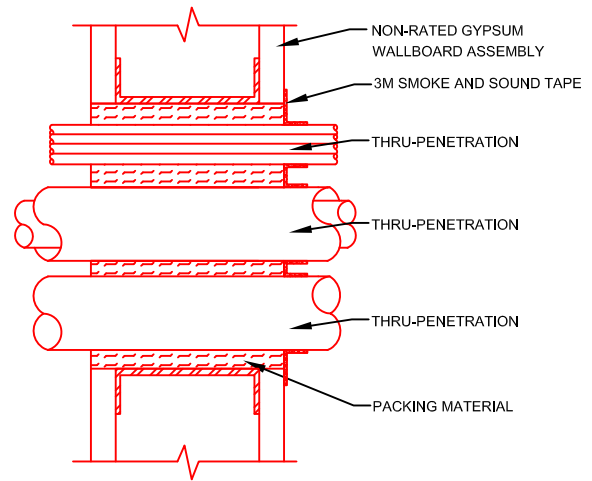
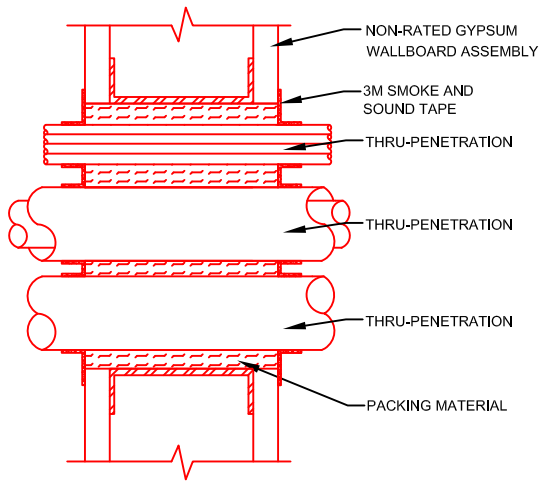
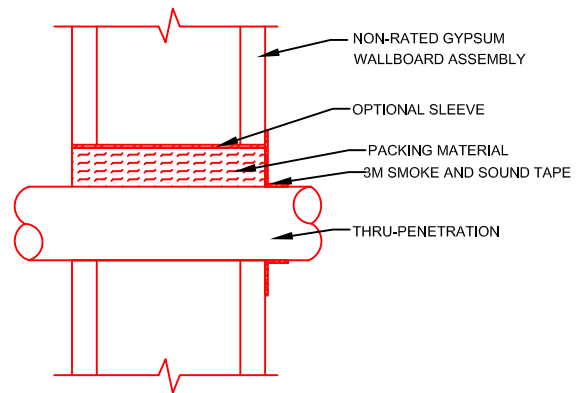
1. THIS PRODUCT IS NOT FOR USE AS A COMMERCIAL FIRESTOP
2. PRODUCT MAY BE APPLIED AT A TEMPERATURE BETWEEN 0°F (-18°C) AND 120°F (49°C).
3. PRODUCT CAN BE APPLIED AND EXPECTED TO ADHERE TO SURFACES THAT ARE 0°F (-18°C) OR HIGHER PROVIDING THAT THE SURFACES ARE FROST FREE, CLEAN, AND DUST FREE.
4. FOR OPTIMAL ADHESION TO CONCRETE, SURFACE SHOULD BE A STEEL FLOATED SMOOTH SURFACE, OR EQUIVALENT, THAT IS FREE OF CHEMICAL ADDITIVES AND/OR COMPOUNDS THAT COULD INHIBIT ADHESION. FOR ROUGHER SURFACES (E.G. BROOM FINISHED) TAPE OVERLAP ONTO SUBSTRATE MAY NEED TO BE INCREASED TO ACHIEVE OPTIMAL ADHESION. CHECK WITH YOUR LOCAL 3M REP TO DETERMINE ACCEPTABLE FINISHES AND REQUIRED OVERLAPS.
5. DETAILS REPRESENT GENERAL INSTALLATION GUIDELINES TO SATISFY SMOKE AND/OR SOUND PARTITION REQUIREMENTS OF THE CURRENT ADOPTION OF THE INTERNATIONAL BUILDING CODE OR LOCAL AUTHORITY HAVING JURISDICTION.
6. FOR SINGLE SIDE APPLICATION 2 LAYERS OF TAPE MUST BE APPLIED TO ACHIEVE L RATING @ 400DEG. F
7. FOR IMPROVED STC RATING PACKING MATERIAL CAN BE INSTALLED.

# 3M SMOKE AND SOUND TAPE INSTALLATION GUIDE

## 2-SIDED APPLICATION



## SINGLE-SIDE APPLICATION



### NOTES/LIMITATIONS

1. THIS PRODUCT IS NOT FOR USE AS A COMMERCIAL FIRESTOP
2. PRODUCT MAY BE APPLIED AT A TEMPERATURE BETWEEN 0°F (-18°C) AND 120°F (49°C).
3. PRODUCT CAN BE APPLIED AND EXPECTED TO ADHERE TO SURFACES THAT ARE 0°F (-18°C) OR HIGHER PROVIDING THAT THE SURFACES ARE FROST FREE, CLEAN, AND DUST FREE.
4. FOR OPTIMAL ADHESION TO CONCRETE, SURFACE SHOULD BE A STEEL FLOATED SMOOTH SURFACE, OR EQUIVALENT, THAT IS FREE OF CHEMICAL ADDITIVES AND/OR COMPOUNDS THAT COULD INHIBIT ADHESION. FOR ROUGHER SURFACES (E.G. BROOM FINISHED) TAPE OVERLAP ONTO SUBSTRATE MAY NEED TO BE INCREASED TO ACHIEVE OPTIMAL ADHESION. CHECK WITH YOUR LOCAL 3M REP TO DETERMINE ACCEPTABLE FINISHES AND REQUIRED OVERLAPS.
5. DETAILS REPRESENT GENERAL INSTALLATION GUIDELINES TO SATISFY SMOKE AND/OR SOUND PARTITION REQUIREMENTS OF THE CURRENT ADOPTION OF THE INTERNATIONAL BUILDING CODE OR LOCAL AUTHORITY HAVING JURISDICTION.
6. FOR SINGLE SIDE APPLICATION 2 LAYERS OF TAPE MUST BE APPLIED TO ACHIEVE L RATING @ 400DEG. F
7. FOR IMPROVED STC RATING PACKING MATERIAL CAN BE INSTALLED.